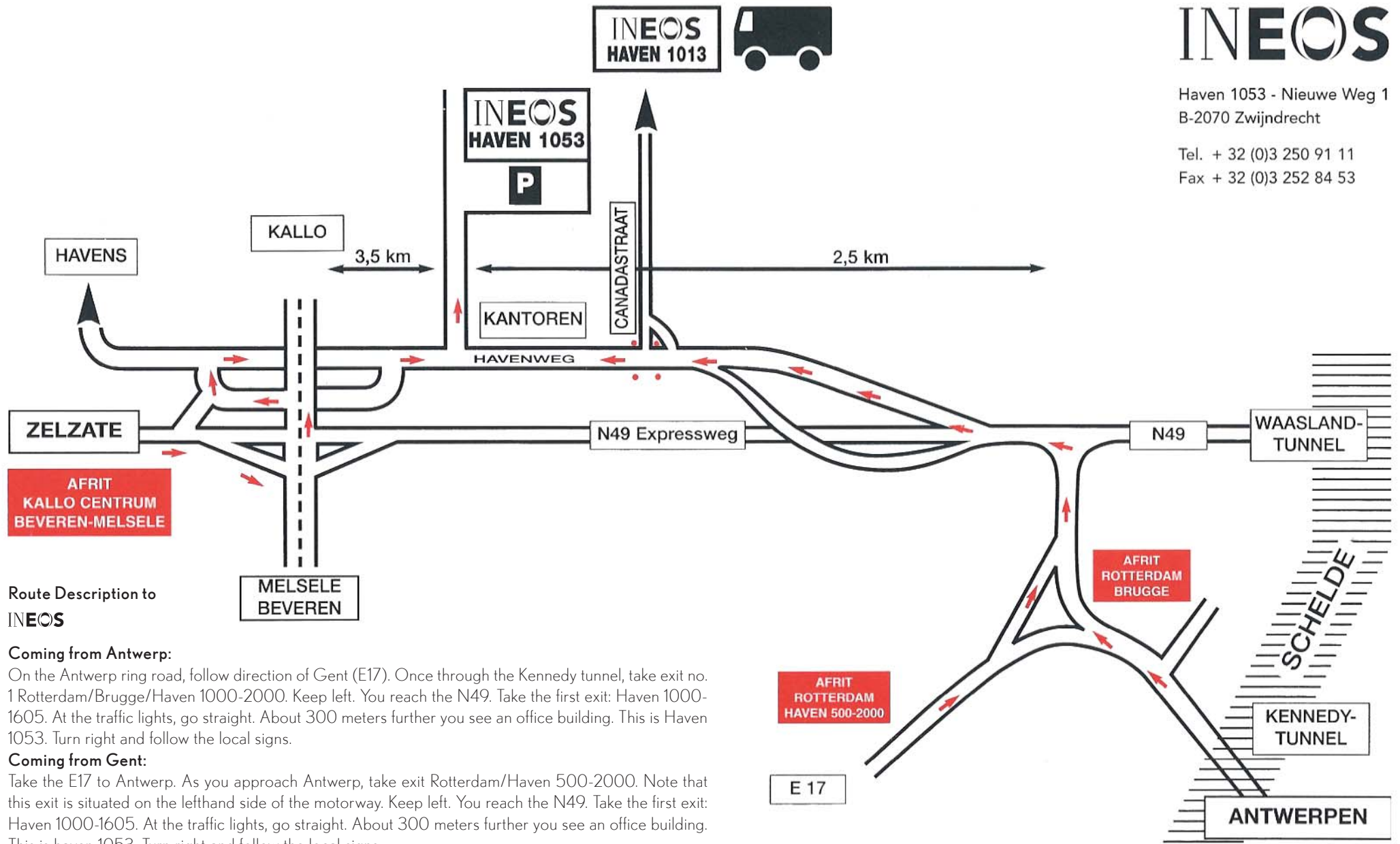




INEOS

Haven 1053 - Nieuwe Weg 1
B-2070 Zwijndrecht

Tel. + 32 (0)3 250 91 11
Fax + 32 (0)3 252 84 53



Route Description to INEOS

Coming from Antwerp:

On the Antwerp ring road, follow direction of Gent (E17). Once through the Kennedy tunnel, take exit no. 1 Rotterdam/Brugge/Haven 1000-2000. Keep left. You reach the N49. Take the first exit: Haven 1000-1605. At the traffic lights, go straight. About 300 meters further you see an office building. This is Haven 1053. Turn right and follow the local signs.

Coming from Gent:

Take the E17 to Antwerp. As you approach Antwerp, take exit Rotterdam/Haven 500-2000. Note that this exit is situated on the lefthand side of the motorway. Keep left. You reach the N49. Take the first exit: Haven 1000-1605. At the traffic lights, go straight. About 300 meters further you see an office building. This is haven 1053. Turn right and follow the local signs.

Coming from Zelzate:

On the N49 you take exit Kallo-centrum/Beveren/Melsele. On the viaduct, take left and immediately left again, direction Haven 1000-1605. Keep right, direction Haven 1000-1099. You arrive on the parallel road, direction Antwerp. After about 3 Kms, you will see an office building on the left. This is haven 1053. Turn left and follow the local signs.

If you use a navigation system, type Haven 1053 or Canadastraat as address.

LOOK OUT !
For loading and unloading of chemical products, trucks enter the plant by Haven 1013 which is located in the Canadastraat.